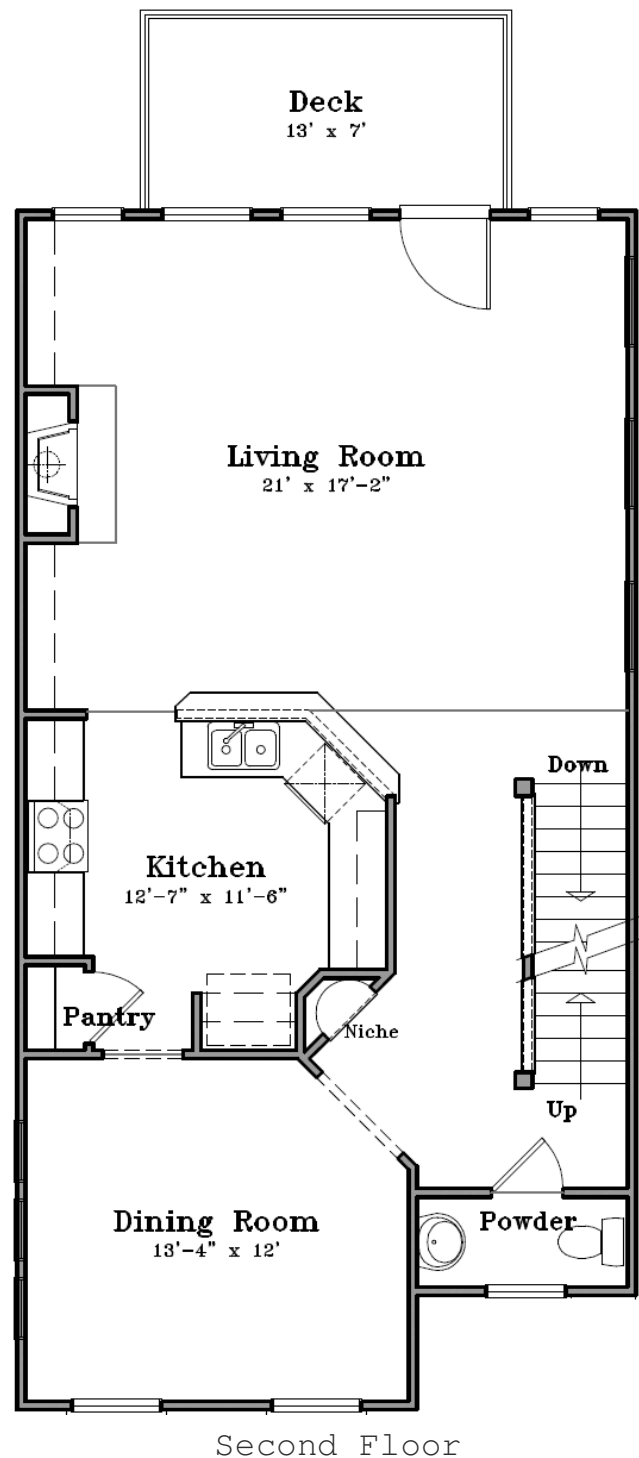
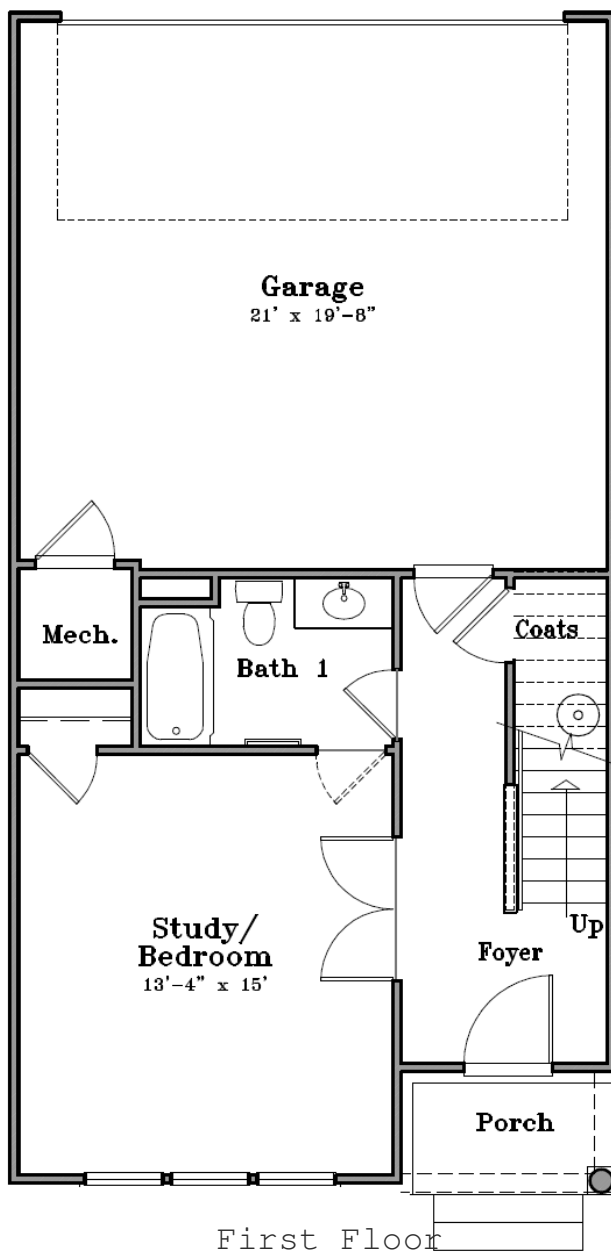
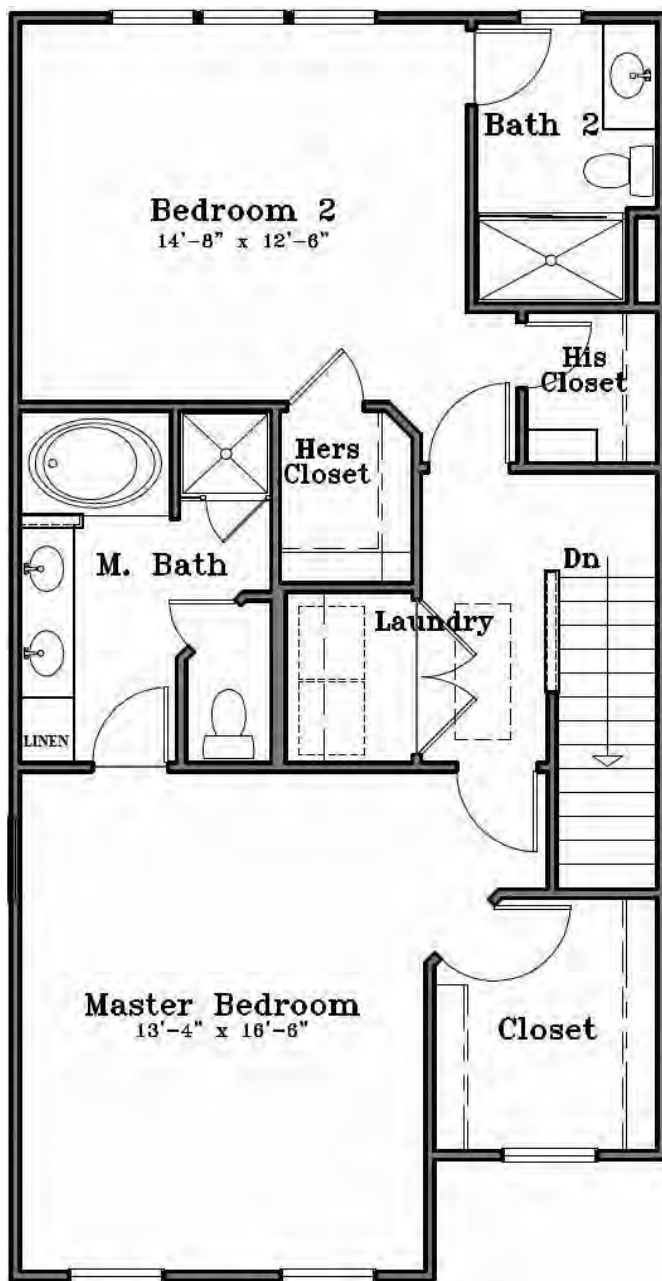




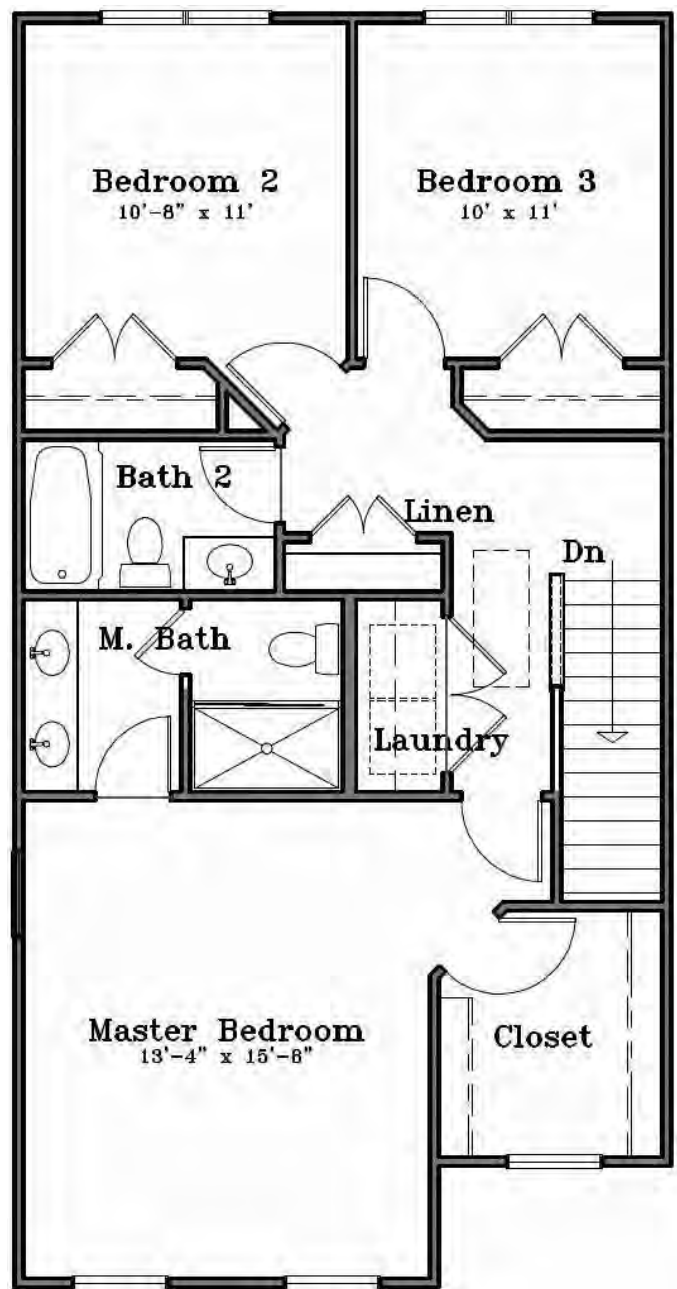
The Regents at Old Mill Village

# Mitchell Mill



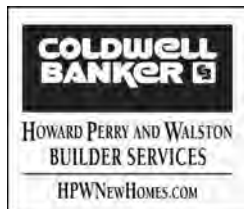


Third Floor



Alternate Third Floor

Square Footage: 2170



For more details contact:  
Joelle Edwards at (919) 393-1997



BECAUSE WE ARE CONTINUALLY IMPROVING OUR PRODUCT, WE RESERVE THE RIGHT TO REVISE OR SUBSTITUTE FEATURES, ARCHITECTURAL DETAILS OR MATERIALS. ILLUSTRATIONS ARE FOR DISCUSSION PURPOSES ONLY AND ARE NOT PART OF A LEGAL CONTRACT. ROOM SIZES ARE APPROXIMATE.



(July - 2007)